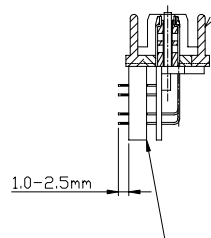
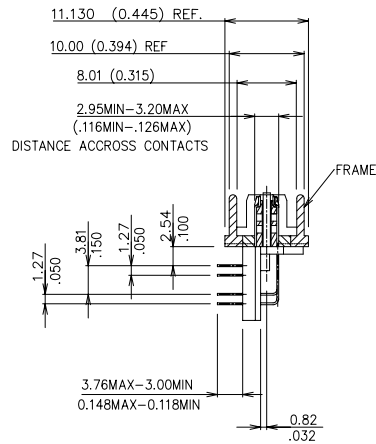
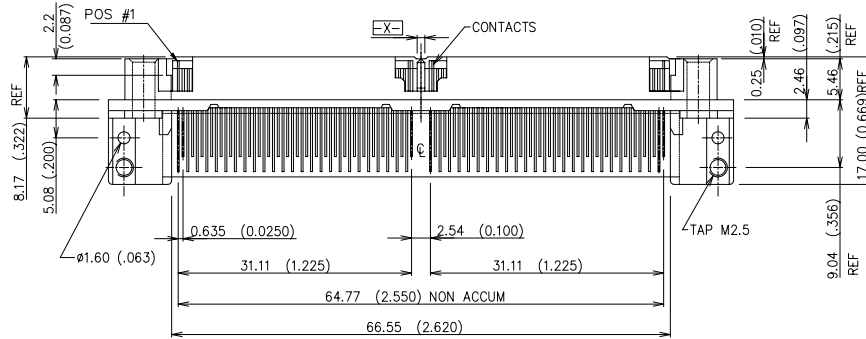
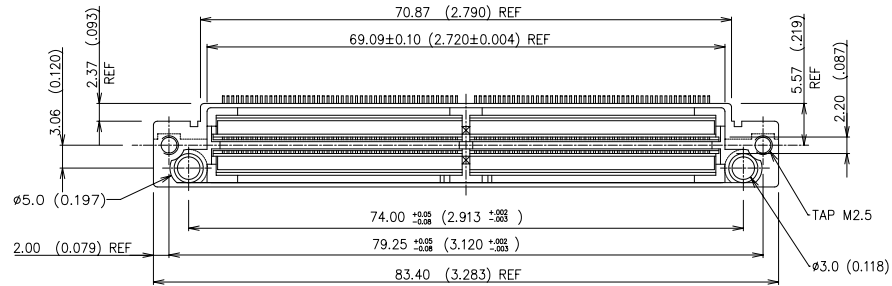


PRODUCT NO.	SCREW
10013357-001/001LF	2 PCS 94148-001 NEEDED FOR EACH 10013357-001, PUT INTO PACKING BOX



For application, move tail guide forward.
Tail length is suggested to be in the range
of 1.0~2.5mm



Note:
Tail length is measured by gauge.

mat'l. code				tolerances unless otherwise specified		CUSTOMER COPY	A FCI www.fciconnect.com		
ltr	ecn no	dr	date		.X ±.3		title		
A	T20322	BEER	11/04/'02	linear	.XX ±.13	projection	MICROPAX 200P RA PLUG		
B	T20350	BEER	12/06/'02		.XXX ±.050				
C	N05-0209	PH	07/15/05	angles	0° ±2°		product family MICROPAX		
				dr	BEER FU 11/04/'02	MM ←→ scale 1:1	size/ dwg no		code
				enrg	BEER FU 11/04/'02		A4		—
				chr	BEER FU 11/04/'02		10013357		sheet
				appd	PAUL WANG 11/04/'02				1 of 2
sheet	revision	C	C						
index	sheet	1	2						

