

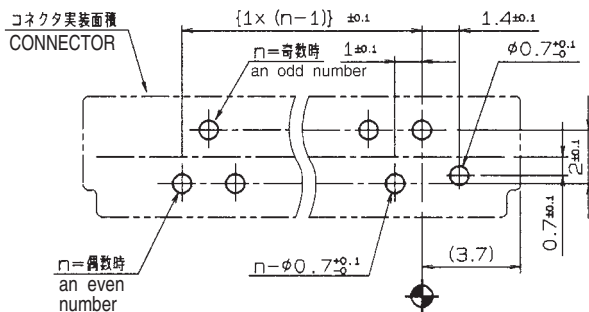
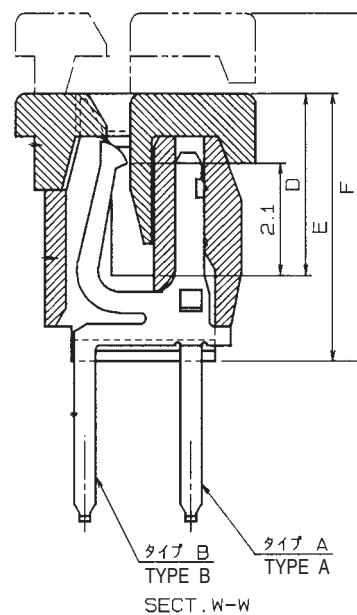
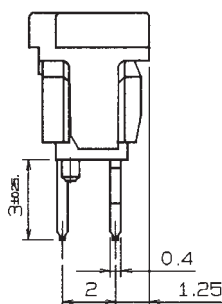
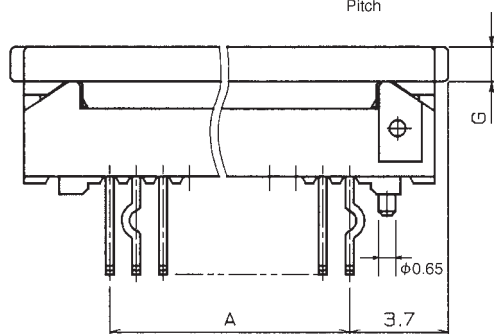
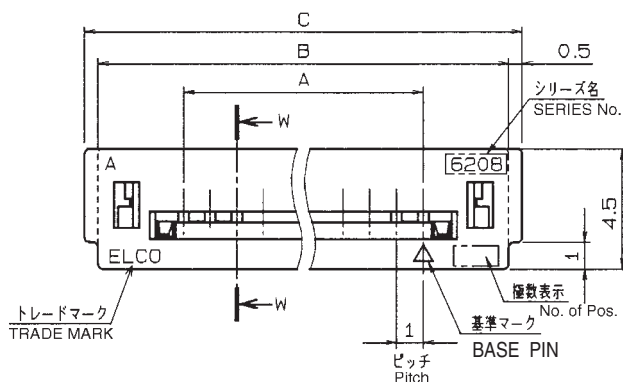
1.0mm Pitch

SERIES

6208

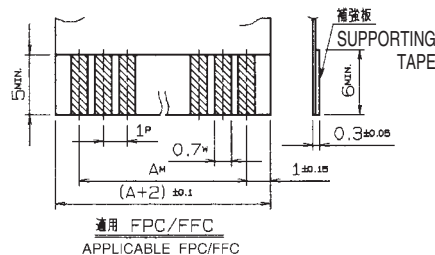
1.0mmピッチ ZIF ストレート DIP 片面接点 スライドロック

1.0mmPitch ZIF Vertical Through hole Single-sided contact Slide lock



基板取付寸法 (コネクタ搭載側)  
MOUNTING LAYOUT  
(t=1.2~1.6)

種類 KIND	公差 TOLERANCE	P	W	M
FPC	±0.02	±0.05	±0.05	±0.1
FFC	±0.05	±0.03	±0.1	



注文コード ORDERING CODE

XX 6208 XX0 1XX XXX X

08: マガジン TUBE PACKAGE  
(ONLY WITHOUT KINKED BOSS)  
00: トレー梱包  
TRAY PACKAGE

0: キング有  
WITH KINKED  
1: キング無  
WITHOUT KINKED  
0: ボス無 WITHOUT BOSS  
1: ボス付 WITH BOSS

極数  
NUMBER  
OF  
POSITIONS

極数 No. of Pos	型番 ASSEMBLY NUMBER	A	B	C	D	E	F	G	収納数量 UNITS/TUBE
5	0X 6208 XX0 105 XXX X	4.0	10.4	11.4	3.4	5.0	6.5	0.8	42
6	106	5.0	11.4	12.4					38
7	107	6.0	12.4	13.4					35
8	108	7.0	13.4	14.4					33
9	109	8.0	14.4	15.4					31
10	110	9.0	15.4	16.4					29
11	111	10.0	16.4	17.4					27
12	112	11.0	17.4	18.4					26
13	113	12.0	18.4	19.4					24
14	114	13.0	19.4	20.4					23
15	115	14.0	20.4	21.4					22
16	116	15.0	21.4	22.4					21
17	117	16.0	22.4	23.4					20
18	118	17.0	23.4	24.4					19
19	119	18.0	24.4	25.4					18
20	120	19.0	25.4	26.4	3.4	5.0	6.5	0.8	18
21	121	20.0	26.4	27.4	3.6	5.2	6.7	1.0	17
22	122	21.0	27.4	28.4					17
23	123	22.0	28.4	29.4					16
24	124	23.0	29.4	30.4					16
25	125	24.0	30.4	31.4	3.6	5.2	6.7	1.0	15
26	126	25.0	31.4	32.4	3.9	5.5	7.0	1.3	15
27	127	26.0	32.4	33.4					14
28	128	27.0	33.4	34.4					14
29	129	28.0	34.4	35.4					13
30	0X 6208 XX0 130 XXX X	29.0	35.4	36.4	3.9	5.5	7.0	1.3	13

生産対応可能極数については、営業部にご確認願います。

Feel free to contact our sales department for available numbers of positions.

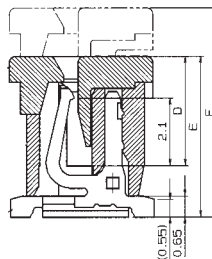
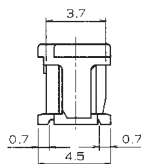
001+: スズ銅めっき Sn-Cu Plated (RoHS対応品 RoHS Compliant Product)

001+: スズ鉛めっき Sn-Pb Plated

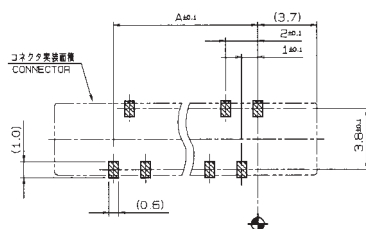
020+: 金めっき Au Plated (RoHS対応品 RoHS Compliant Product)

## SERIES

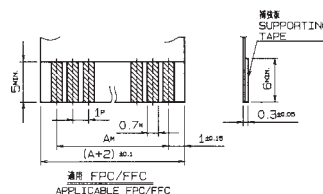
**1.0mmピッチ ストレート SMT スライドロック**  
**1.0mmPitch Vertical SMT Slide lock**



SECT. X-X



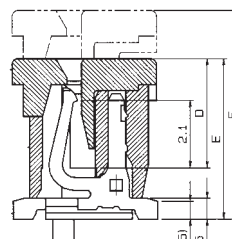
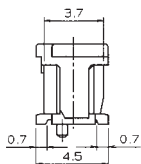
基板取付寸法 (コネクタ搭載側)  
MOUNTING LAYOUT



種類 KIND	公差 TOLERANCE		
	P	W	M
FPC	±0.02	+0.07 -0.05	±0.05
FFC	±0.05	±0.03	±0.1

Technical drawing of a 6205 ball bearing. The drawing includes a side view and a cross-sectional view. Key dimensions and labels are as follows:

- Dimensions:**
  - Overall width: 17 mm
  - Overall length: 25.4 mm
  - Inner diameter:  $\phi 25$
  - Outer diameter:  $\phi 62$
  - Ball diameter:  $\phi 5$
  - Ball pitch: 12 mm
  - Distance from inner ring to first ball: 3.7 mm
  - Distance from outer ring to last ball: 3.7 mm
  - Distance between balls: 12 mm
  - Distance from last ball to outer ring: 3.7 mm
  - Distance from first ball to inner ring: 3.7 mm
  - Distance between balls: 12 mm
  - Distance from first ball to inner ring: 3.7 mm
  - Distance between balls: 12 mm
  - Distance from last ball to outer ring: 3.7 mm
  - Distance between balls: 12 mm
  - Distance from last ball to outer ring: 3.7 mm
- Labels:**
  - キャビティ NO. CAVITY No.
  - シリーズ名 SERIES No.
  - 6205
  - 基準マーク BASE PIN
  - 測点 No. OF POS. (O)
  - トレードマーク TRADE MARK



SECT. X-X

格 NO. POS	型 番 ASSEMBLY NUMBER	A	B	C	D	E	F	G	収納数 UNITS/2U
5	0X 6208 XXX 005 XXX X	4.0	10.4	11.4	3.4	5.0	6.5	0.8	42
6	006	5.0	11.4	12.4					38
7	007	6.0	12.4	13.4					35
8	008	7.0	13.4	14.4					33
9	009	8.0	14.4	15.4					31
10	010	9.0	15.4	16.4					29
11	011	10.0	16.4	17.4					27
12	012	11.0	17.4	18.4					26
13	013	12.0	18.4	19.4					24
14	014	13.0	19.4	20.4					23
15	015	14.0	20.4	21.4					21
16	016	15.0	21.4	22.4					22
17	017	16.0	22.4	23.4					19
18	018	17.0	23.4	24.4					20
19	019	18.0	24.4	25.4					18
20	020	19.0	25.4	26.4					18
21	021	20.0	26.4	27.4	3.4	5.0	6.5	0.8	17
22	022	21.0	27.4	28.4					16
23	023	22.0	28.4	29.4					16
24	024	23.0	29.4	30.4					15
25	025	24.0	30.4	31.4	3.6	5.2	6.7	1.0	15
26	026	25.0	31.4	32.4	3.9	5.5	7.0	1.3	14
27	027	26.0	32.4	33.4	3.9	5.5	7.0	1.3	14
28	028	27.0	33.4	34.4	3.9	5.5	7.0	1.3	14
29	029	28.0	34.4	35.4	3.9	5.5	7.0	1.3	13
30	0X 6208 XXX 030 XXX X	29.0	35.4	36.4	3.9	5.5	7.0	1.3	13

**XX 6208 XXX 0XX XXX X**

Tape &amp; Reel Package 00 6208 5XX X10 XXX X

生産対応可能極数については、営業部にご確認願います。  
Feel free to contact our sales department for  
available numbers of positions.

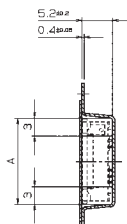
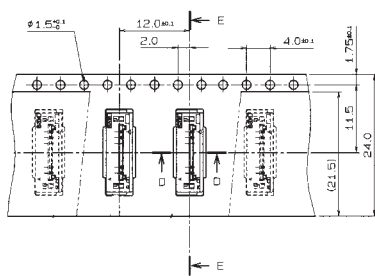
1.0mm Pitch

SERIES

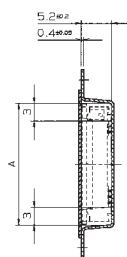
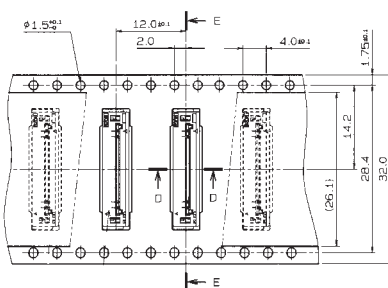
6208

エンボス梱包品 SMT

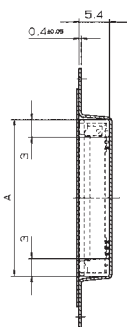
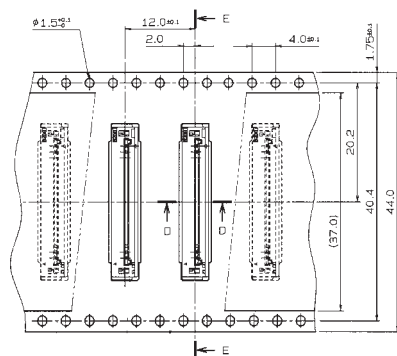
Tape and Reel Package SMT



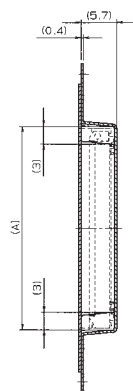
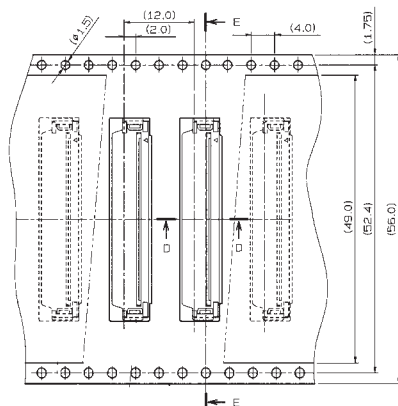
SECT. E-E



SECT. E-E



SECT. E-E



SECT. E-E

SECT. D-D

型番 ASSEMBLY NUMBER	極数 NO.OF POS.	A
00 6208 505 110 XXX X	5	11.6
↑ 506	6	12.6
↑ 507	7	13.6
↑ 508	8	14.6
↓ 509	9	15.6
00 6208 510 110 XXX X	10	16.6

型番 ASSEMBLY NUMBER	極数 NO.OF POS.	A
00 6208 511 210 XXX X	11	17.6
↑ 512	12	18.6
↑ 513	13	19.6
↑ 514	14	20.6
↓ 515	15	21.6
00 6208 516 210 XXX X	16	22.6

型番 ASSEMBLY NUMBER	極数 NO.OF POS.	A
00 6208 517 310 XXX X	17	23.6
↑ 518	18	24.6
↑ 519	19	25.6
↑ 520	20	26.6
↑ 521	21	27.6
↑ 522	22	28.6
↑ 523	23	29.6
↑ 524	24	30.6
↓ 525	25	31.6
00 6208 526 310 XXX X	26	32.6

型番 ASSEMBLY NUMBER	極数 NO.OF POS.	A
00 6208 527 410 XXX X	27	33.6
↑ 528	28	34.6
↓ 529	29	35.6
00 6208 530 410 XXX X	30	36.6

生産対応可能極数については、営業部にご確認願います。

Feel free to contact our sales department for available numbers of positions.

## 注文コード ORDERING CODE

00 6208 5XX X10 XXX X

極数  
NUMBER  
OF  
POSITIONS

バリエーション VARIATION CODE

- 1 : エンボス Tape & Reel 24.0mm
- 2 : エンボス Tape & Reel 32.0mm
- 3 : エンボス Tape & Reel 44.0mm
- 4 : エンボス Tape & Reel 56.0mm

000+ : スズ銅めっき Sn-Cu Plated (RoHS対応品 RoHS Compliant Product)

000 : スズ鉛めっき Sn-Pb Plated

009+ : カーボンフレキ対応 C/Ag type (RoHS対応品 RoHS Compliant Product)

009 : カーボンフレキ対応 C/Ag type

008+ : 金めっき Au Plated (RoHS対応品 RoHS Compliant Product)

008 : 金めっき Au Plated

梱包数量 1000個/リール

PACKING QUANTITY : 1000/Reel