
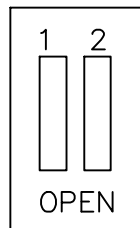


THIS DOCUMENT CONTAINS DATA PROPRIETARY TO PROJECTS UNLIMITED, INC. ANY USE OR REPRODUCTION, IN ANY FORM, WITHOUT PRIOR WRITTEN PERMISSION OF PROJECTS UNLIMITED, INC. IS PROHIBITED.
© 2005, Projects Unlimited Inc.

SPECIFICATIONS

PARAMETERS	VALUES	UNITS
RATED VOLTAGE	24	Vdc
OPERATING VOLTAGE RANGE	9 ~ 28	Vdc
RATED CURRENT	6	mA
FASH RATE	30 & 60	PULSE PER MINUTE
INGRESS PROTECTION	IP54 	—
COLOR	RED	—
OPERATING TEMPERATURE	-10 ~ +55	°C
HOUSING MATERIAL	ABS	—
TERMINAL MATERIAL	SCREW	—
WEIGHT	100	grams

DETAIL "A"



CONNECTION DETAILS SWITCH 1 (POWER)

OPEN—LOW (3mA nom)
CLOSED—HIGH (5mA nom)

SWITCH 2 (RATE)

OPEN—SLOW (1/2Hz)
CLOSED—FAST (1Hz)

OPTIONAL BASES

DEEP BASE: AWA—DBR

U BASE: AWA—UBR

120Vac BASE: AWA—DBR—120

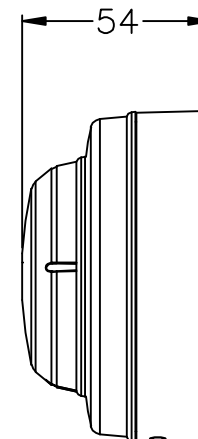
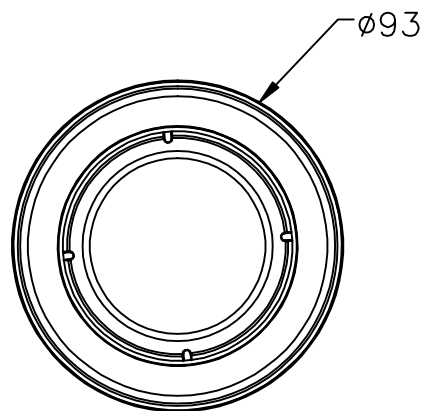
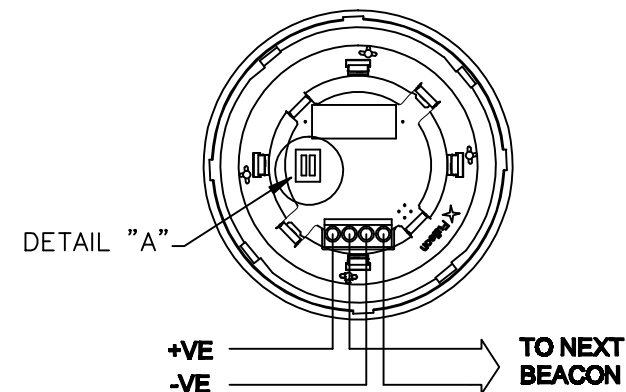
NOTES:

- ALL DIMENSIONS ARE IN MILLIMETERS.
- SPECIFICATION SUBJECT TO CHANGE OR WITHDRAWAL WITHOUT NOTICE.
- THIS PART IS RoHS 2002/95/EC COMPLIANT.
- IP65 WITH USE OF AWA—DBR, AWA—DBR—120, OR AWA—UBR BASE.

FILE NAME
VW—35SBR—RL.DWG

REVISIONS

LTR	DESCRIPTION	DATE	APPROVED
—	RELEASED FROM ENGINEERING	12/6/05	
A	ADDED RoHS, BASE NOTES & CURRENT	5/21/07	R.W.



UNLESS OTHERWISE SPECIFIED:
DIMENSIONS ARE IN
MILLIMETERS, TOLERANCES ARE ±0.5 AND
ANGLES ARE ±3°.

APPROVALS	DATE
DRAWN <i>J.A.F.</i>	12/05
CHECKED <i>E.P.</i>	12/05
APPROVED <i>B.R.</i>	12/05

DO NOT SCALE DRAWING



projects®
unlimited

Dayton , Ohio

SIREN

SIZE
A

DRAWING NO.
VW—35SBR—RL

SCALE: N.T.S.

SHEET 1 OF 1