

AMPHENOL PART NUMBER CONFIGURATION:

U65 - X XX - X X 2 XXX

INFINITY
RECEPTACLE

STYLE

B = R/A SMT, 2 LOCATION
AND 2 SOLDERING POSTS
E = R/A SMT, 2 LOCATION
AND 2 SCREW MOUNT HOLES

CONNECTOR TYPE

04 = 4X
12 = 12X

PLATING

1 = 50μ" GOLD
2 = 30μ" GOLD
3 = GOLD FLASH OVER
PALLADIUM-NICKEL (LEAD FREE)
4 = 50μ" GOLD (RoHS COMPLIANT)
5 = 30μ" GOLD (RoHS COMPLIANT)

JACK SCREW OPTION

0 = SHIPPED LOOSE (REGULAR SCREW)
1 = SHIPPED LOOSE (SELF-LOCKING SCREW)
2 = NO JACK SCREW (ORDER SEPERATELY)

PACKAGING/SPECIAL

NO DIGIT = TRAY PACKAGING
NO REAR COVER
C = TRAY PACKAGING
WITH REAR COVER (SHIPPED LOOSE)
T = TAPE & REEL PACKAGING
NO REAR COVER
CT = TAPE & REEL PACKAGING
WITH REAR COVER (SHIPPED LOOSE)
M = TRAY PACKAGING WITH M2 RETENTION
SCREWS (SHIPPED LOOSE) AND NO REAR COVER
CM = TRAY PACKAGING WITH M2 RETENTION
SCREWS AND REAR COVER (SHIPPED LOOSE)
MT = TAPE & REEL PACKAGING WITH M2 RETENTION
SCREWS (SHIPPED LOOSE) AND NO REAR COVER
CMT = TAPE & REEL PACKAGING WITH M2 RETENTION
SCREWS AND REAR COVER (SHIPPED LOOSE)

KEYING OPTION

0 = NO KEYING (STD)

MOUNTING STYLE

SCREW LOCK

REVISIONS

SYM	ZONE	ECN, ERN NO.	DATE	APPRD.
B		EAR # 12705	2005/03/23	
C		PROPOSAL	2006/01/06	

THIS IS A CAD DRAWING. DO NOT MANUALLY REVISE.

1. MATERIAL:

PLASTIC HOUSING:

HIGH TEMPERATURE RESISTANT NYLON, FLAMMABILITY RATING UL94V-0.

CONTACTS:

PHOSPHOR BRONZE

PLATING OPTION (50μ" OR 30μ" GOLD):

50μ" [1.27 μm] OR 30μ" [0.76 μm] MIN. GOLD OVER 50μ" [1.27 μm] MIN. NICKEL ON CONTACT
MATING SURFACES. 150μ" [3.81 μm] MIN. TIN-LEAD (90/10) OVER 50μ" [1.27 μm] NICKEL ON
CONTACT TAILS.

PLATING OPTION (GOLD FLASH OVER PALLADIUM-NICKEL):

2μ" [0.05 μm] MIN. GOLD OVER 25μ" [0.635 μm] MIN. PALLADIUM-NICKEL ON CONTACT MATING
SURFACES. 0.3μ" [0.007 μm] MIN. GOLD OVER 1.2μ" [0.03 μm] MIN. PALLADIUM-NICKEL ON
CONTACT TAILS. 50μ" [1.27 μm] MIN. NICKEL UNDER PLATING.

PLATING OPTION (RoHS) (50μ" OR 30μ" GOLD):

50μ" [1.27 μm] OR 30μ" [0.76 μm] MIN. GOLD OVER 50μ" [1.27 μm] MIN. NICKEL ON CONTACT
MATING SURFACES. 2μ" [0.05 μm] MIN. GOLD OVER 50μ" [1.27 μm] MIN. NICKEL ON CONTACT TAILS.

METAL SHELL:

DIE CASTING ALLOY

PLATING:

100μ" [2.54 μm] MIN. NICKEL OVER COPPER UNDER LAYER

GASKET:

STAINLESS STEEL

JACK SCREW:

STEEL

PLATING:

100μ" [2.54 μm] MIN. NICKEL OVER ALL
RECOMMENDED TORQUE: 4-4.5 IN LB.

RETENTION SCREWS:

STEEL WITH ZINC PLATING

2. TEMPERATURE RANGE:

-40°C TO +85°C

DRAWN	L.DENG	DATE	2005/01/24	Amphenol Canada Corp.		
DESIGNED						
CHECKED	J.SI	DATE	2005/01/26	TITLE		
I. E. APPRD.						
Q. A. APPRD.				INFINITY 4X/12X RECEPTACLE, SCREW LOCK STYLE, FIXED BOARD, RIGHT ANGLE SMT		
DWG. APPRD.						
ENG. REL. NO.		DWG		DRAWING NO.		REV.
REF.	EAR # 12636	A		P-U65-XXX-XX2XXX		C
DIMENSIONS ARE IN	INCHES [mm]	03554	SCALE	2/1	WT.	SURF.
						SHEET 1 OF 4

THIS DOCUMENT CONTAINS PROPRIETARY INFORMATION AND SUCH INFORMATION
MAY NOT BE DISCLOSED TO OTHERS FOR ANY PURPOSE OR USED FOR MANUFACTURING
PURPOSES WITHOUT WRITTEN PERMISSION FROM AMPHENOL CANADA CORP.

A

B

C

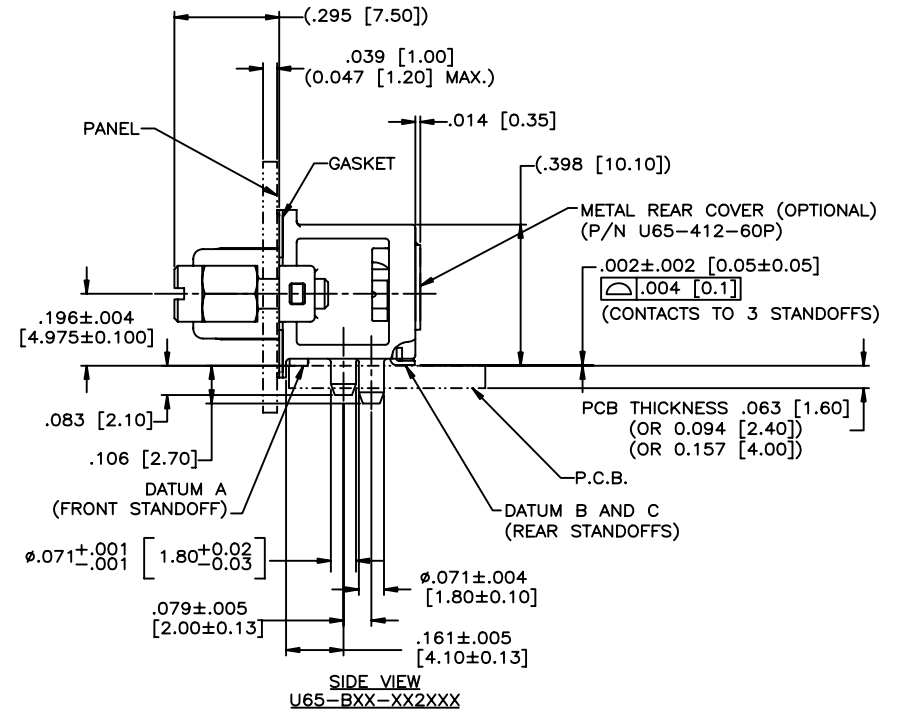
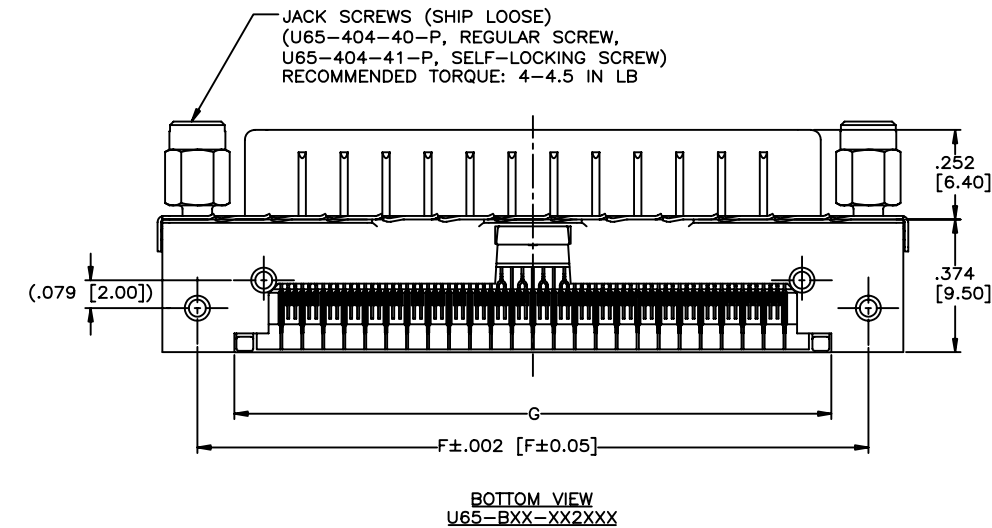
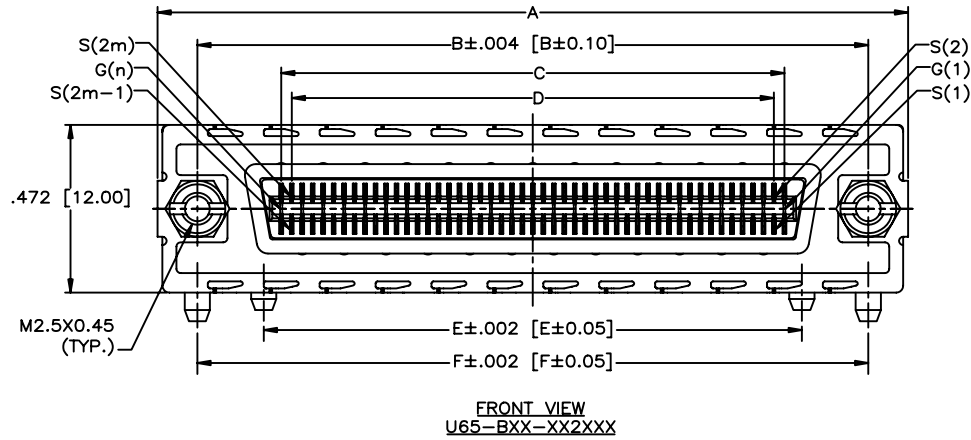
D

E

F

REVISIONS				
SYM	ZONE	ECN, ERN NO.	DATE	APPRD.
B		EAR # 12705	2005/03/23	
C		PROPOSAL	2006/01/06	

THIS IS A CAD DRAWING. DO NOT MANUALLY REVISE.



PART NUMBER	U65-X04-XX2XXX	U65-X12-XX2XXX
A	1.169 [29.70]	2.114 [53.70]
B	.945 [24.00]	1.890 [48.00]
C	.472 [12.00]	1.417 [36.00]
D	.413 [10.50]	1.358 [34.50]
E	.571 [14.50]	1.516 [38.50]
F	.945 [24.00]	1.890 [48.00]
G	.736 [18.70]	1.681 [42.70]
H	1.063 [27.00]	2.008 [51.00]
K	.776 [19.70]	1.720 [43.70]
m	m = 1 - 8	m = 1 - 24
n	n = 1 - 9	n = 1 - 25

** REFER TO [mm] AS PRIMARY DIMENSIONS.

DRAWN	L.DENG	DATE	2005/01/24	Amphenol Canada Corp.	
DESIGNED					
CHECKED	J.SI	DATE	2005/01/26	TITLE	
I. E. APPRD.					
Q. A. APPRD.				INFINITY 4X/12X RECEPTACLE, SCREW LOCK STYLE, FIXED BOARD, RIGHT ANGLE SMT	
DWG. APPRD.					
ENG. REL. NO.		DWG	A	DRAWING NO.	P-U65-XXX-XX2XXX
REF. EAR # 12636		SCALE	2/1	WT.	
DIMENSIONS ARE IN INCHES [mm]		CODE ID. NO.	03554	SURF.	
				SHEET	2 OF 4

THIS DOCUMENT CONTAINS PROPRIETARY INFORMATION AND SUCH INFORMATION
MAY NOT BE DISCLOSED TO OTHERS FOR ANY PURPOSE OR USED FOR MANUFACTURING
PURPOSES WITHOUT WRITTEN PERMISSION FROM AMPHENOL CANADA CORP.

A

B

C

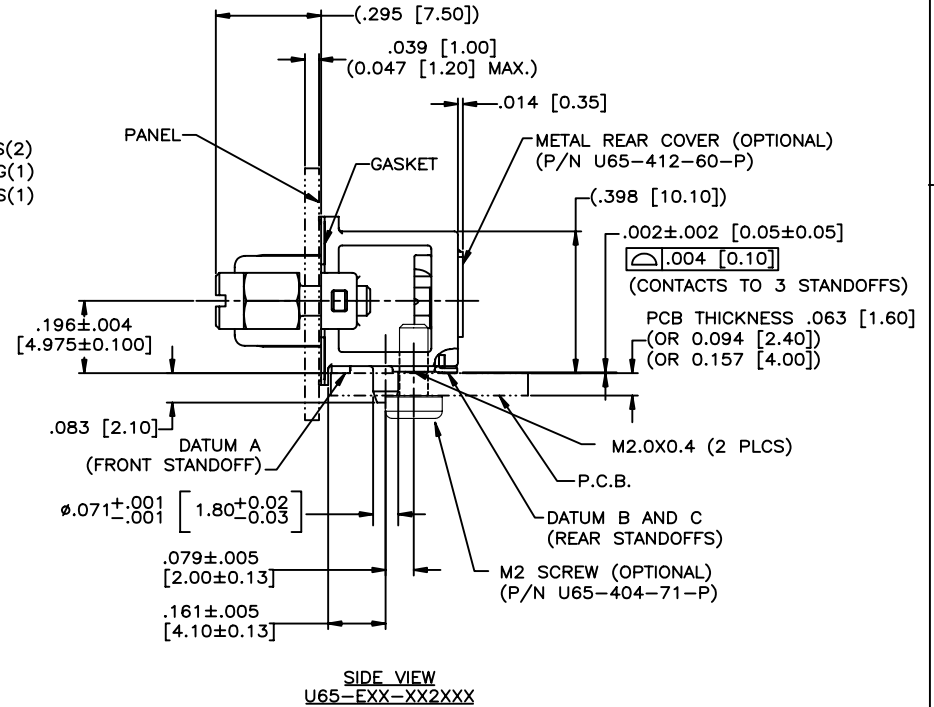
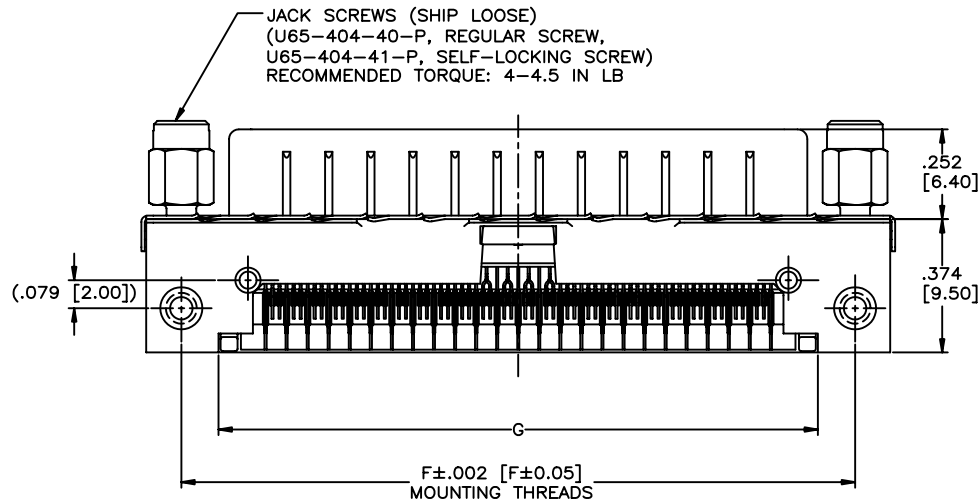
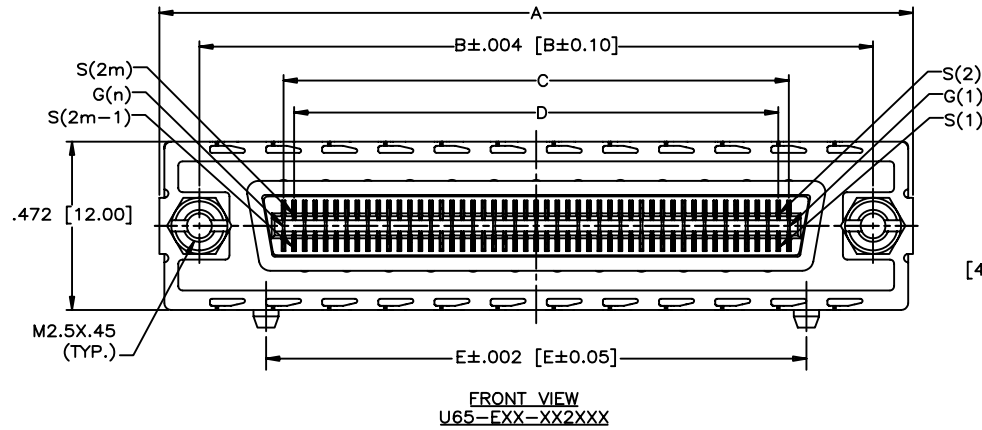
D

E

F

REVISIONS				
SYM	ZONE	ECN, ERN NO.	DATE	APPRD.
B		EAR # 12705	2005/03/23	
C		PROPOSAL	2006/01/06	

THIS IS A CAD DRAWING. DO NOT MANUALLY REVISE.



** REFER TO [mm] AS PRIMARY DIMENSIONS.

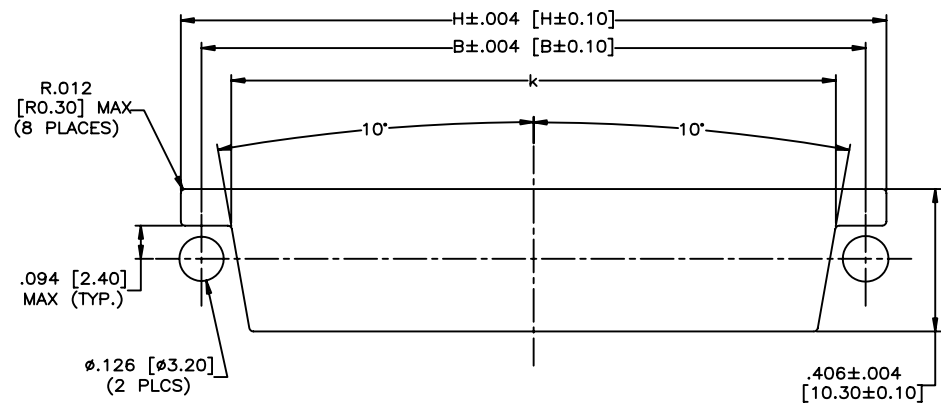
DRAWN	L.DENG	DATE	2005/01/24	Amphenol Canada Corp.	
DESIGNED					
CHECKED	J.SI	2005/01/28			
I. E. APPRD.					
Q. A. APPRD.				TITLE	
DWG. APPRD.				INFINITY 4X/12X RECEPTACLE, SCREW LOCK STYLE, FIXED BOARD, RIGHT ANGLE SMT	
ENG. REL. NO.				DWG	DRAWING NO.
REF.	EAR # 12636			A	P-U65-XXX-XX2XXX
DIMENSIONS ARE IN	INCHES	CODE ID. NO.	03554	SCALE	2/1
	[mm]			WT.	
				SURF.	
					SHEET 3 OF 4

THIS DOCUMENT CONTAINS PROPRIETARY INFORMATION AND SUCH INFORMATION
MAY NOT BE DISCLOSED TO OTHERS FOR ANY PURPOSE OR USED FOR MANUFACTURING
PURPOSES WITHOUT WRITTEN PERMISSION FROM AMPHENOL CANADA CORP.

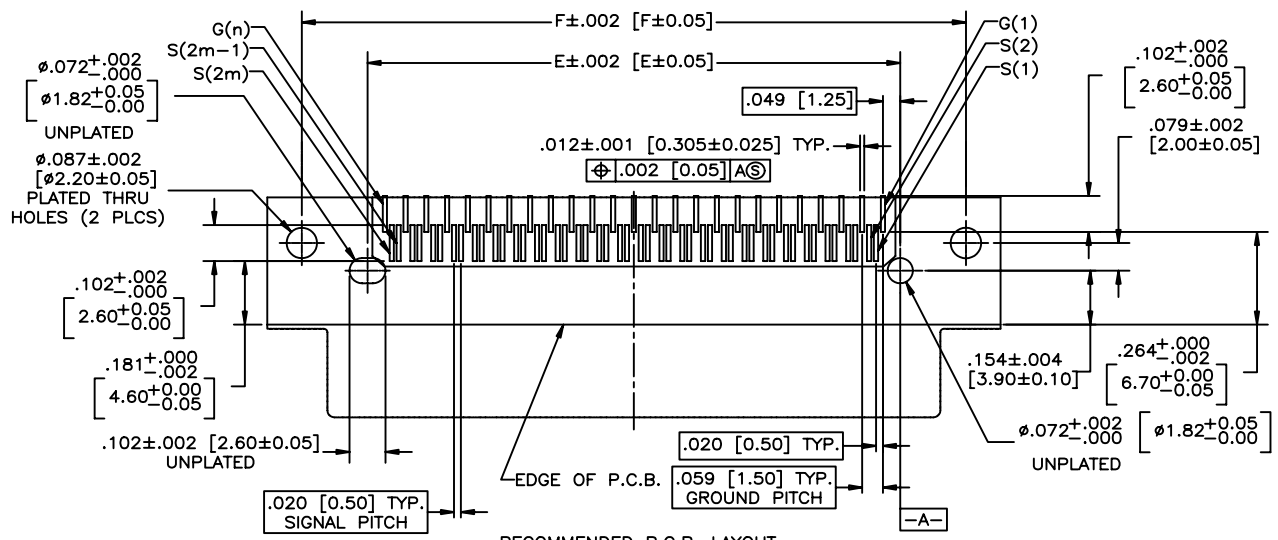
A B C D E F

REVISIONS				
SYM	ZONE	ECN, ERN NO.	DATE	APPRD.
B		EAR # 12705	2005/03/23	
C		PROPOSAL	2006/01/06	

THIS IS A CAD DRAWING. DO NOT MANUALLY REVISE.



RECOMMENDED PANEL CUTOUT



RECOMMENDED P.C.B. LAYOUT
(COMPONENTS SIDE OF BOARD)

** REFER TO [mm] AS PRIMARY DIMENSIONS.

DRAWN	L.DENG	DATE	2005/01/24	Amphenol Canada Corp.	
DESIGNED					
CHECKED	J.SI	DATE	2005/01/26	TITLE	
I. E. APPRD.				INFINITY 12X RECEPTACLE, SCREW LOCK STYLE, FIXED BOARD, RIGHT ANGLE SMT	
Q. A. APPRD.					
DWG. APPRD.				DWG. NO. P-U65-XXX-XX2XXX	
ENG. REL. NO.				SCALE	2/1
REF. EAR # 12636				WT.	-----
DIMENSIONS ARE IN INCHES [mm]				SURF.	-----
03554					SHEET 4 OF 4

THIS DOCUMENT CONTAINS PROPRIETARY INFORMATION AND SUCH INFORMATION
MAY NOT BE DISCLOSED TO OTHERS FOR ANY PURPOSE OR USED FOR MANUFACTURING
PURPOSES WITHOUT WRITTEN PERMISSION FROM AMPHENOL CANADA CORP.