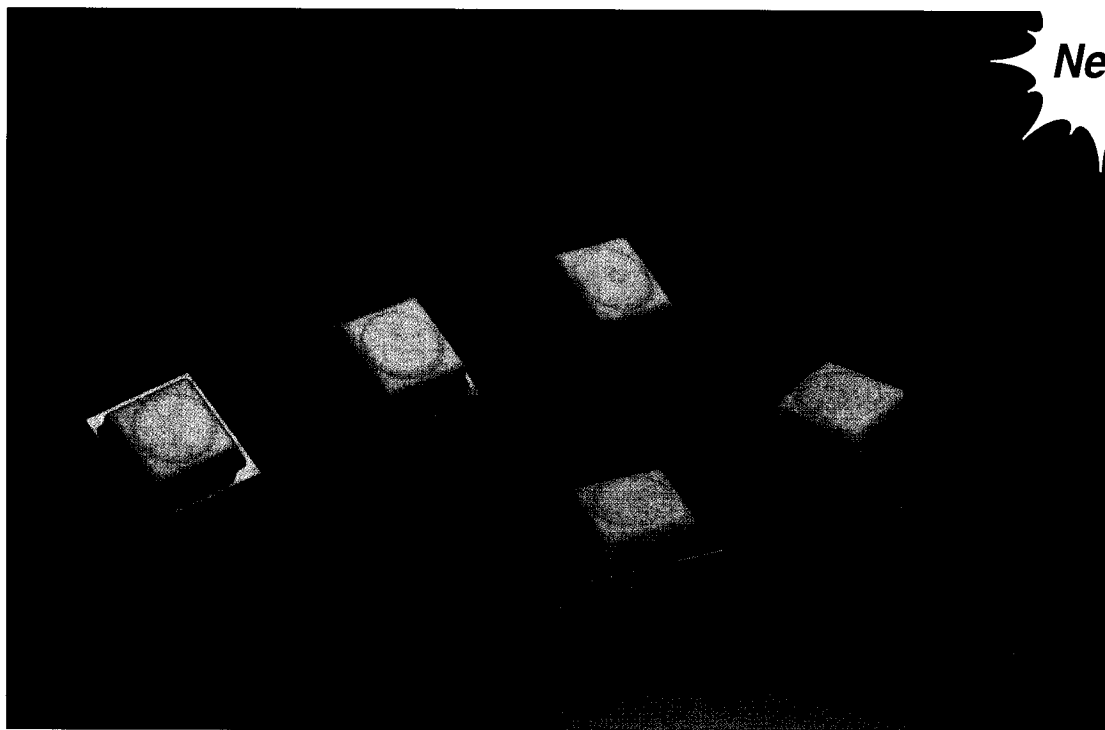


C&K RT Series Tactile Pushbutton Switches

New!

*The ideal switch
for a variety of
applications!*



C&K's new RT Series Tactile Pushbutton Switches feature a silicone rubber dome with an extended mechanical travel that is five times greater than the traditional metal dome tactile switches. Constructed of high temperature thermoplastic materials, these miniature tactiles are process compatible and capable of withstanding infra-red soldering processes. The RT Series is available in thru-hole and surface mount packages with an actuation force of 120 or 300 grams.

Features

- Low cost
- Long mechanical travel
- High temperature plastics
- Tape and reel packaging

Applications

- Computers and peripherals
- Telecommunications equipment
- Cell and cordless phones
- 2-way radios

If your design requires a high quality, low cost tactile switch, delivered within your time frame, C&K has the solution. For additional information, free samples and our latest catalog, call today. Or make your request online at www.ckcorp.com.

Tel: (800) 635-5936
Fax: (617) 926-6846
Web Site: www.ckcorp.com

C&K® C&K Components, Inc.
57 Stanley Avenue
Watertown, MA 02472-4802
The Primary Source Worldwide®



The Primary Source Worldwide

RT Series Tactile Pushbutton Switches

SPECIFICATIONS

CONTACT RATING: 5mA max. @ 12 V DC.
50 μ A min. @ 2 V DC.

ELECTRICAL & MECHANICAL LIFE:
50,000 cycles.

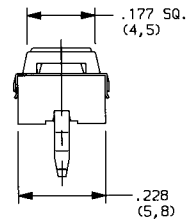
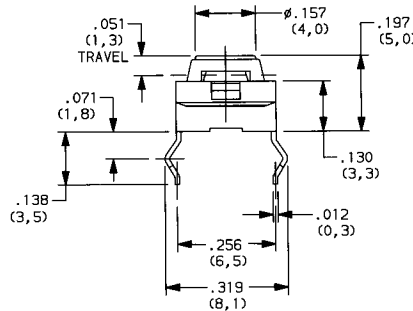
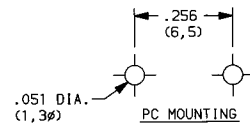
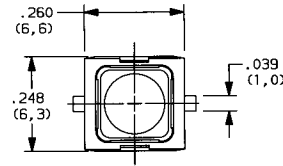
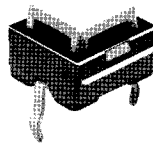
CONTACT RESISTANCE: 1K Ω max. initial.

INSULATION RESISTANCE: 100M Ω min.

DIELECTRIC STRENGTH: 250 V AC.

OPERATING TEMPERATURE: -30°C to 80°C.

PACKAGING: Surface mount models, tape & reel,
1,000 switches per reel.
Thru-hole models, bulk packaging.



PART NUMBER	ACTUATOR FORCE (grams)	PACKAGING
RT11P2BCHD1	120	Bulk
RT11P2ECHD1	300	Bulk

MATERIALS

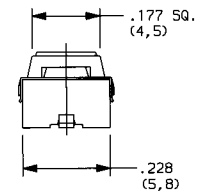
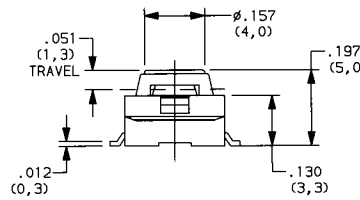
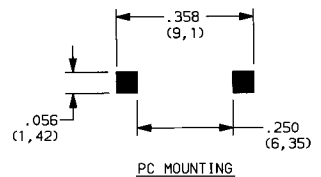
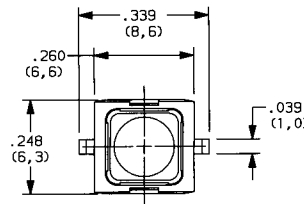
BASE: LCP.

COVER: Stainless steel.

ACTUATOR: LCP.

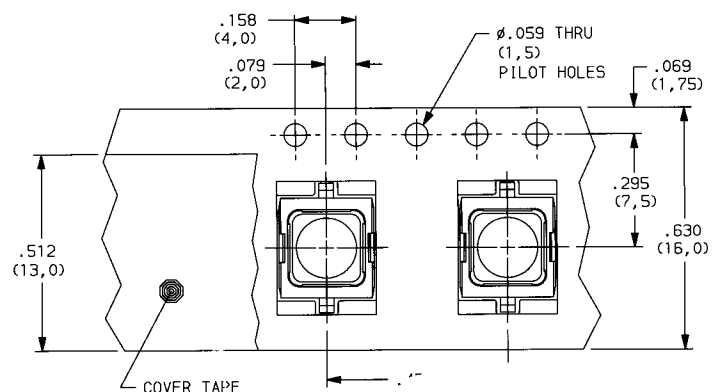
DOMES: Silicone rubber.

TERMINALS: Brass.



PART NUMBER	ACTUATOR FORCE (grams)	PACKAGING
RT11P2BSHD1R	120	Tape & Reel
RT11P2ESHD1R	300	Tape & Reel
RT11P2BSHD1	120	Bulk
RT11P2ESHD1	300	Bulk

TAPE & REEL PACKAGING



Components, Inc.

57 Stanley Avenue
Watertown, MA 02472-4802

For additional information and a free
copy of our latest catalog, call:

Tel: (800) 635-5936

Fax: (617) 926-6846

Website: www.ckcorp.com