

PART NUMBER CODING

P _ C _ _ D _ _ N

TERMINATION TYPE

NUMBER OF POSITIONS PER ROW

(01 THRU 36)

PLATING

ALL PLATINGS HAVE .000050" NICKEL UNDERPLATE

CONTACT SURFACE

TERMINATION

B = .000010" GOLD

.000100" PURE TIN, MATTE

C = .000030" GOLD

.000100" PURE TIN, MATTE

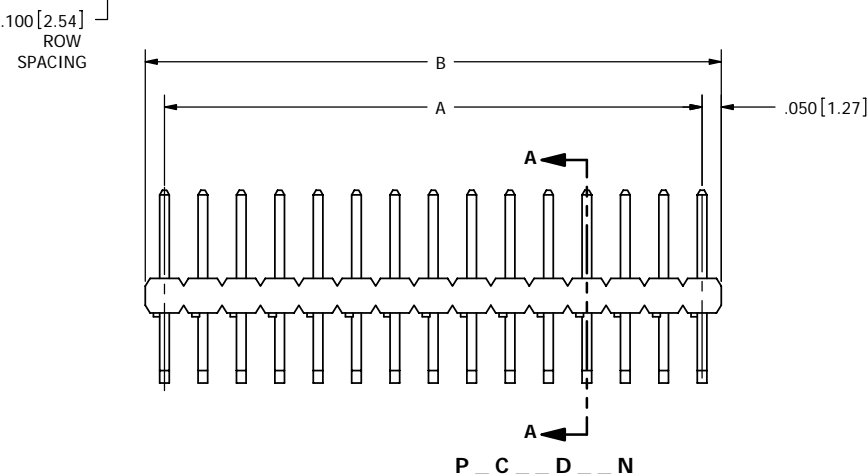
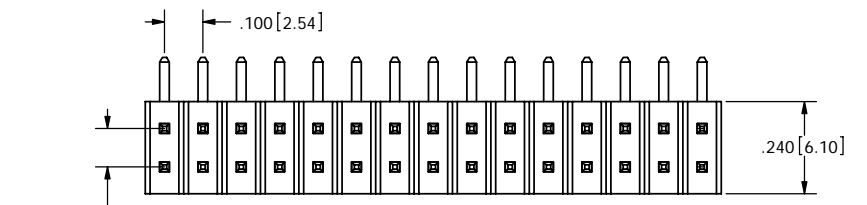
E = .000100" PURE TIN, MATTE OVERALL

LEAD FREE

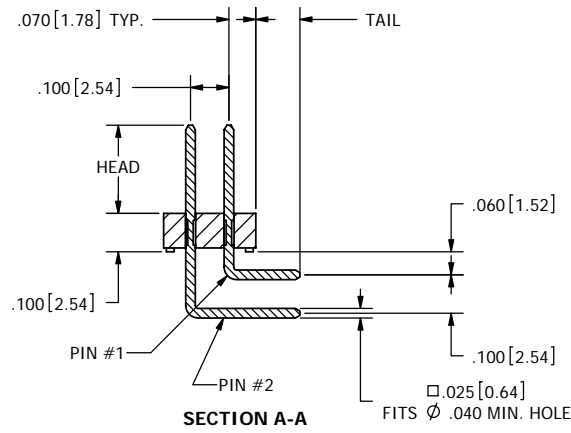
REVISIONS				
REV.	ECO NO.	DESCRIPTION	DATE	BY
A	1030	INITIAL RELEASE	3/12/2007	SB

TERMINATION TYPE RIGHT ANGLE BEND		
TERMINATION CODE	HEAD DIMENSION ±.008[0.20]	TAIL DIMENSION ±.025[0.64]
BA	.230[5.84]	.100[2.54]
BB	.230[5.84]	.200[5.08]
BC	.230[5.84]	.300[7.62]
BD	.230[5.84]	.400[10.16]
BE	.230[5.84]	.500[12.17]
GA	.318[8.08]	.100[2.54]
GB	.318[8.08]	.200[5.08]

PART NUMBER	A		B	
	INCH ±.008	MM ±0.20	INCH ±.020	MM ±0.51
P_ C01D _ _ N	0.000	0.00	0.100	2.54
P_ C02D _ _ N	0.100	2.54	0.200	5.08
P_ C03D _ _ N	0.200	5.08	0.300	7.62
P_ C04D _ _ N	0.300	7.62	0.400	10.16
P_ C05D _ _ N	0.400	10.16	0.500	12.70
P_ C06D _ _ N	0.500	12.70	0.600	15.24
P_ C07D _ _ N	0.600	15.24	0.700	17.78
P_ C08D _ _ N	0.700	17.78	0.800	20.32
P_ C09D _ _ N	0.800	20.32	0.900	22.86
P_ C10D _ _ N	0.900	22.86	1.000	25.40
P_ C11D _ _ N	1.000	25.40	1.100	27.94
P_ C12D _ _ N	1.100	27.94	1.200	30.48
P_ C13D _ _ N	1.200	30.48	1.300	33.02
P_ C14D _ _ N	1.300	33.02	1.400	35.56
P_ C15D _ _ N	1.400	35.56	1.500	38.10
P_ C16D _ _ N	1.500	38.10	1.600	40.64
P_ C17D _ _ N	1.600	40.64	1.700	43.18
P_ C18D _ _ N	1.700	43.18	1.800	45.72
P_ C19D _ _ N	1.800	45.72	1.900	48.26
P_ C20D _ _ N	1.900	48.26	2.000	50.80
P_ C21D _ _ N	2.000	50.80	2.100	53.34
P_ C22D _ _ N	2.100	53.34	2.200	55.88
P_ C23D _ _ N	2.200	55.88	2.300	58.42
P_ C24D _ _ N	2.300	58.42	2.400	60.96
P_ C25D _ _ N	2.400	60.96	2.500	63.50
P_ C26D _ _ N	2.500	63.50	2.600	66.04
P_ C27D _ _ N	2.600	66.04	2.700	68.58
P_ C28D _ _ N	2.700	68.58	2.800	71.12
P_ C29D _ _ N	2.800	71.12	2.900	73.66
P_ C30D _ _ N	2.900	73.66	3.000	76.20
P_ C31D _ _ N	3.000	76.20	3.100	78.74
P_ C32D _ _ N	3.100	78.74	3.200	81.28
P_ C33D _ _ N	3.200	81.28	3.300	83.82
P_ C34D _ _ N	3.300	83.82	3.400	86.36
P_ C35D _ _ N	3.400	86.36	3.500	88.90
P_ C36D _ _ N	3.500	88.90	3.600	91.44



RIGHT ANGLE BEND TERMINATION



- NOTES:**
- INSULATOR MATERIAL: PBT
 - CONTACT MATERIAL: PHOSPHOR BRONZE
 - PLATING: SEE PART NUMBER CODING
 - TEMPERATURE: -65°C TO +125°C
 - PROCESSING TEMP: 260°C FOR 10 SECONDS MAX
 - UL FLAMMABILITY RATING: 94V-0
 - VOLTAGE RATING: 600 VDC MINIMUM AT SEA LEVEL.
 - CURRENT RATING: 3 AMP PER CONTACT PAIR
 - VOLTAGE DROP: 30 MILLI VOLT AT RATED CURRENT
 - INSULATION RESISTANCE: 5000 MEGA OHM



RoHS COMPLIANT

CUSTOMER COPY

UNLESS OTHERWISE SPECIFIED: DIMENSIONS ARE IN INCHES[MM]		DATE	NAME
TOLERANCES: ANGULAR: ± 1° XX = ± .02 [.508] .XXX = ± .005 [.1270] XXXX = ± .0005 [.0127] PARENTHETICAL INFORMATION IS FOR REFERENCE ONLY		05/17/2006	HT
INTERPRET DIMENSIONS AND GEOMETRIC TOLERANCING PER: ANSI Y14.5-1984			
		SULLINS ELECTRONICS .100" MALE HEADER PART NUMBER P_ C _ _ D _ _ N SIZE DWG. NO. C C10908 REV A	
SCALE: 4:1		SHEET 1 OF 1	